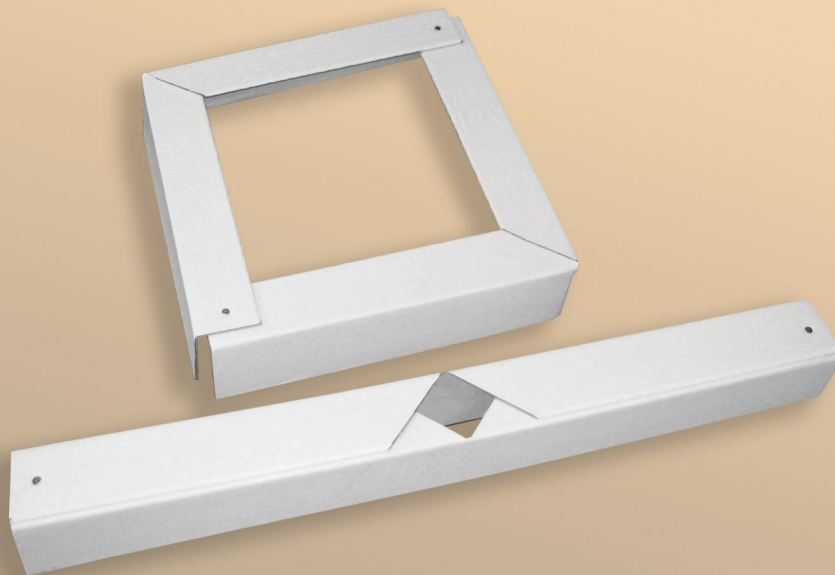


# Pallet Frame™

The perfect edge to protect your product line



- Lightweight, one-piece design
- Enhances load stability
- Versatile

**Pallet Frame™** is an economical protective packaging material used for edge protection, unitization and stabilization. Its lightweight, preformed one-piece design doesn't require assembly, simplifying application. Pallet Frame remains in place without additional securement making it easy to apply stretch wrapping or strapping to the load, further enhancing load stabilization.

Pallet frame, available in white or brown, can be sized to your specifications. It can also be printed for product identification and point-of-sale merchandising.

**100% Recyclable**

Angleboard products are made from 100% recycled materials.

©2014 ANGLEBOARD IAB-1002 11/14



## Specifications

Pallet Frame sizes are based on the following dimensions:

### **Leg height -**

Available in 2" x 2", 2.5" x 2.5" and 3" x 3"

(50 mm x 50 mm, 64 mm x 64 mm and 76 mm x 76 mm)

### **Wall caliper -**

Available in .090", .160", .180", .200" and .240" (2.2 mm, 4.0 mm, 4.5 mm, 5.0 mm and 6.1 mm)

### **Length -**

Minimum: 12" (304 mm)

Maximum: 96" (2438 mm)

  
**Angleboard**

**We've got all the angles covered.**

Phone: 1-800-252-4777 • [www.angleboard.com](http://www.angleboard.com)